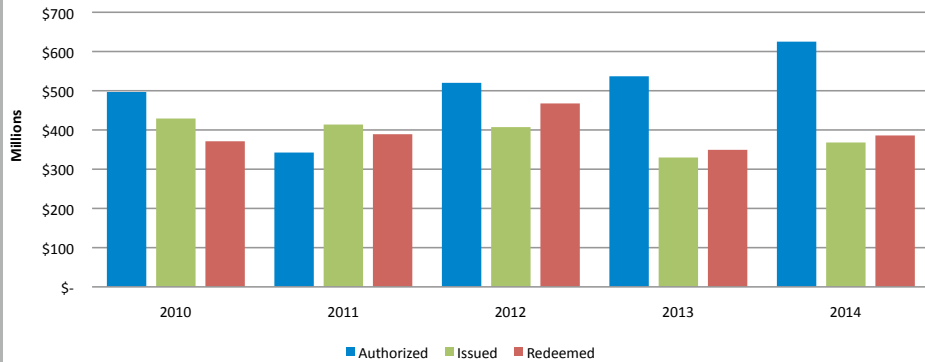


# TAX CREDITS

Missouri Economic Development Tax Credits Authorized, Issued, and Redeemed (By Fiscal Year)



FY  
2010-2014

**\$2.52**  
BILLION

**AUTHORIZED**

**\$1.95**  
BILLION

**ISSUED**

**\$1.96**  
BILLION

**REDEEMED**

**\$1.54**  
BILLION

**AUTHORIZED BUT NOT ISSUED**

**\$1.13**  
BILLION

**ISSUED BUT NOT REDEEMED**

This fact sheet is based on the Missouri Senate Appropriations Committee's 2013 Annual Fiscal Report. Missouri Department of Revenue tax credit information is provided by the Missouri House Budget Committee. For more information, please visit [www.showmeinstitute.org/FastFacts2015](http://www.showmeinstitute.org/FastFacts2015).

5297 Washington Place | Saint Louis, MO 63108 | 314-454-0647 | [www.showmeinstitute.org](http://www.showmeinstitute.org)

Read Our Blog:  
[showmedaily.org](http://showmedaily.org)

Use Our Interactive Database:  
[showmedata.org](http://showmedata.org)

Find Us on Facebook:  
[facebook.com/showmeinstitute](https://facebook.com/showmeinstitute)



# MISSOURI FAST FACTS



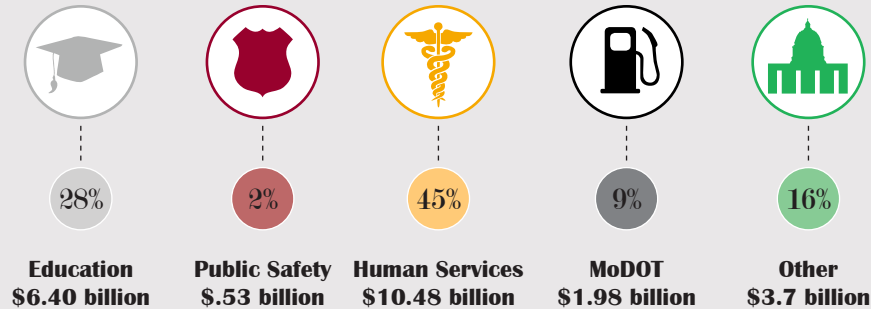
**A Snapshot of Missouri's  
Budget, Tax Rates,  
& Tax Credits**

**A Show-Me Institute Publication**

ADVANCING LIBERTY WITH RESPONSIBILITY  
BY PROMOTING MARKET SOLUTIONS  
FOR MISSOURI PUBLIC POLICY

# EXPENDITURES - FY 2014

## Missouri Expenditure Breakdown - By Spending Category -

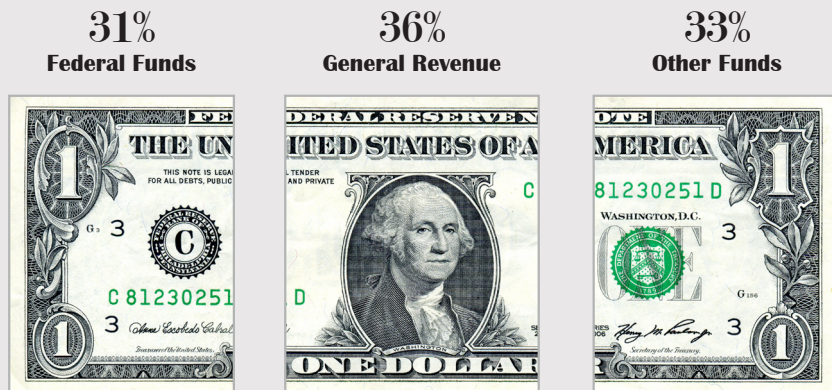


Human Services includes Social Services, Mental Health, and Health and Senior Services. MoDOT is the Missouri Department of Transportation.

### Total Missouri Expenditures

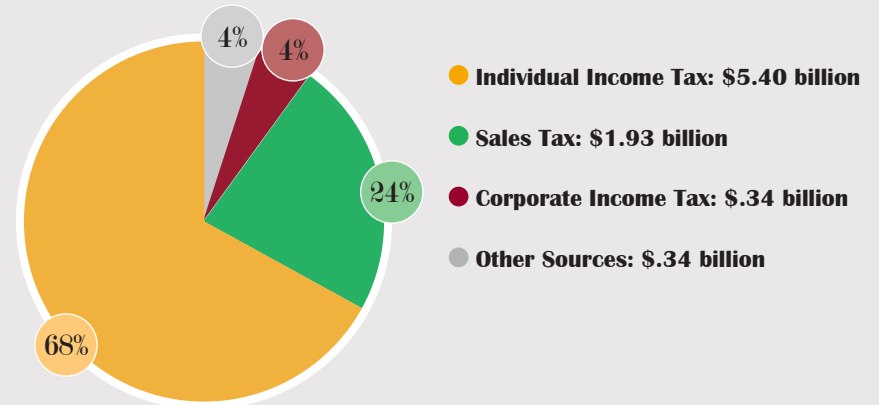
**\$23.1 billion**

## Where Is The Money Coming From? - Funding Sources Of Missouri Spending -



# REVENUE - FY 2014

## Missouri Net General Revenue Breakdown - By Tax Source -



### Missouri Net General Revenue Collections

**\$8.0 billion**

## Missouri Tax Rates

