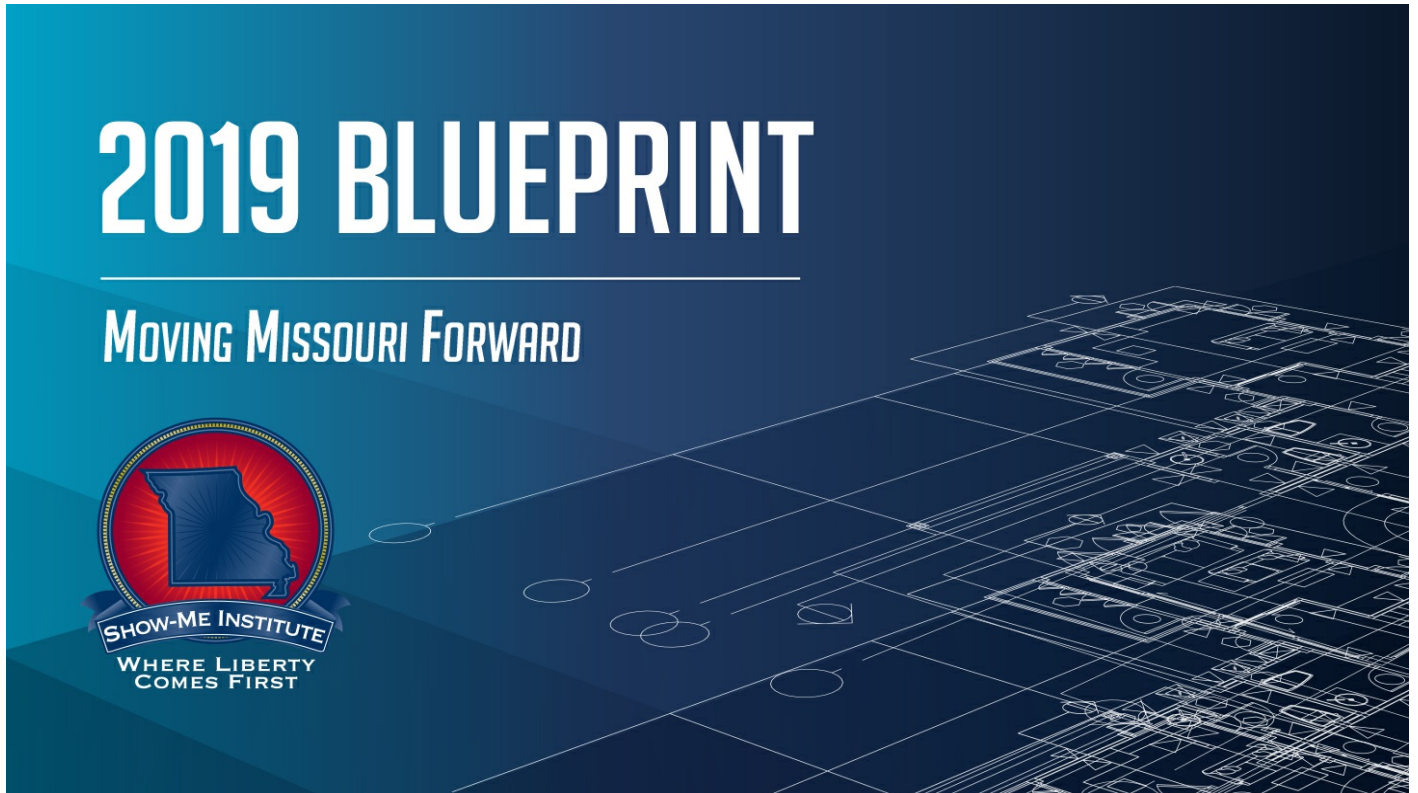




# 2019 Blueprint: Moving Missouri Forward

Published on *Show-Me Institute* (<https://showmeinstitute.org>)



The Show-Me Institute's *2019 Blueprint: Moving Missouri Forward* presents 16 policy ideas covering issues ranging from education to health care, from public pensions to union reform, and from tax policy to transportation. Click on the link at the bottom of this post to view the entire report, or click on the items in the following list for articles on the individual topics:

- [Certificate of Need](#)
- [Charter School Expansion](#)
- [Earned Income Tax Credit](#)
- [Earnings Tax](#)
- [Economic Development Subsidies](#)
- [Education Funding Formula](#)
- [Education Savings Accounts](#)
- [Incentive Pay for Teachers](#)
- [Open Collective Bargaining](#)
- [Prevailing Wage](#)
- [Sentencing Reform](#)
- [Special Taxing Districts](#)
- [Spending Transparency](#)
- [Teacher Retirement Savings Accounts](#)
- [Transportation Funding](#)

- [Workforce Development](#)

## Read More:

 [Download Missouri Blueprint 2019\\_web.pdf](#) (3.73 MB)

## About the Author



*Show-Me Staff*

## Read Online

<https://showmeinstitute.org/publication/local-government/2019-blueprint-moving-missouri-forward>

## Links

- [1] <https://showmeinstitute.org/publication/local-government/2019-blueprint-moving-missouri-forward>
- [2] <https://showmeinstitute.org/file/5206/download?token=uoJSChV6>
- [3] <https://showmeinstitute.org/file/5207/download?token=LcFf2MBm>
- [4] <https://showmeinstitute.org/file/5208/download?token=qlsfcZt5>
- [5] <https://showmeinstitute.org/file/5209/download?token=qOXylhrU>
- [6] [https://showmeinstitute.org/file/5210/download?token=z\\_tg9ZGS](https://showmeinstitute.org/file/5210/download?token=z_tg9ZGS)
- [7] <https://showmeinstitute.org/file/5211/download?token=-iaT4z5S>
- [8] [https://showmeinstitute.org/file/5212/download?token=2n\\_5dOAd](https://showmeinstitute.org/file/5212/download?token=2n_5dOAd)
- [9] <https://showmeinstitute.org/file/5213/download?token=LecxOxUo>
- [10] <https://showmeinstitute.org/file/5214/download?token=EyDTE7hK>
- [11] <https://showmeinstitute.org/file/5215/download?token=o82wTmG9>
- [12] [https://showmeinstitute.org/file/5216/download?token=r\\_mSIK\\_0](https://showmeinstitute.org/file/5216/download?token=r_mSIK_0)
- [13] <https://showmeinstitute.org/file/5217/download?token=DUtzsj7n>
- [14] <https://showmeinstitute.org/file/5218/download?token=32zUxTys>
- [15] [https://showmeinstitute.org/file/5219/download?token=giZa7Y\\_](https://showmeinstitute.org/file/5219/download?token=giZa7Y_)
- [16] <https://showmeinstitute.org/file/5220/download?token=JbJkCB8O>
- [17] <https://showmeinstitute.org/file/5221/download?token=rXDmyrg->
- [18] <https://showmeinstitute.org/file/5123/download?token=CtrlcXk9>

## Mission Statement

Advancing liberty with responsibility by promoting market solutions for Missouri public policy.

## Show-Me Institute

5297 Washington Place  
Saint Louis, MO 63108  
Phone: (314) 454-0647  
Fax: (314) 454-0667

3645 Troost Avenue  
Kansas City, MO 64109  
Phone: (816) 287-0370

Email: [info@showmeinstitute.org](mailto:info@showmeinstitute.org)

## **Support Our Work**

The Show-Me Institute is a tax-exempt 501(c)(3) nonprofit organization. Make your tax deductible contribution today: <http://ShowMeInstitute.org/donate>